

Changing conversations around heritage

Hugh Pearman

Chair, IWA Heritage Advisory Panel







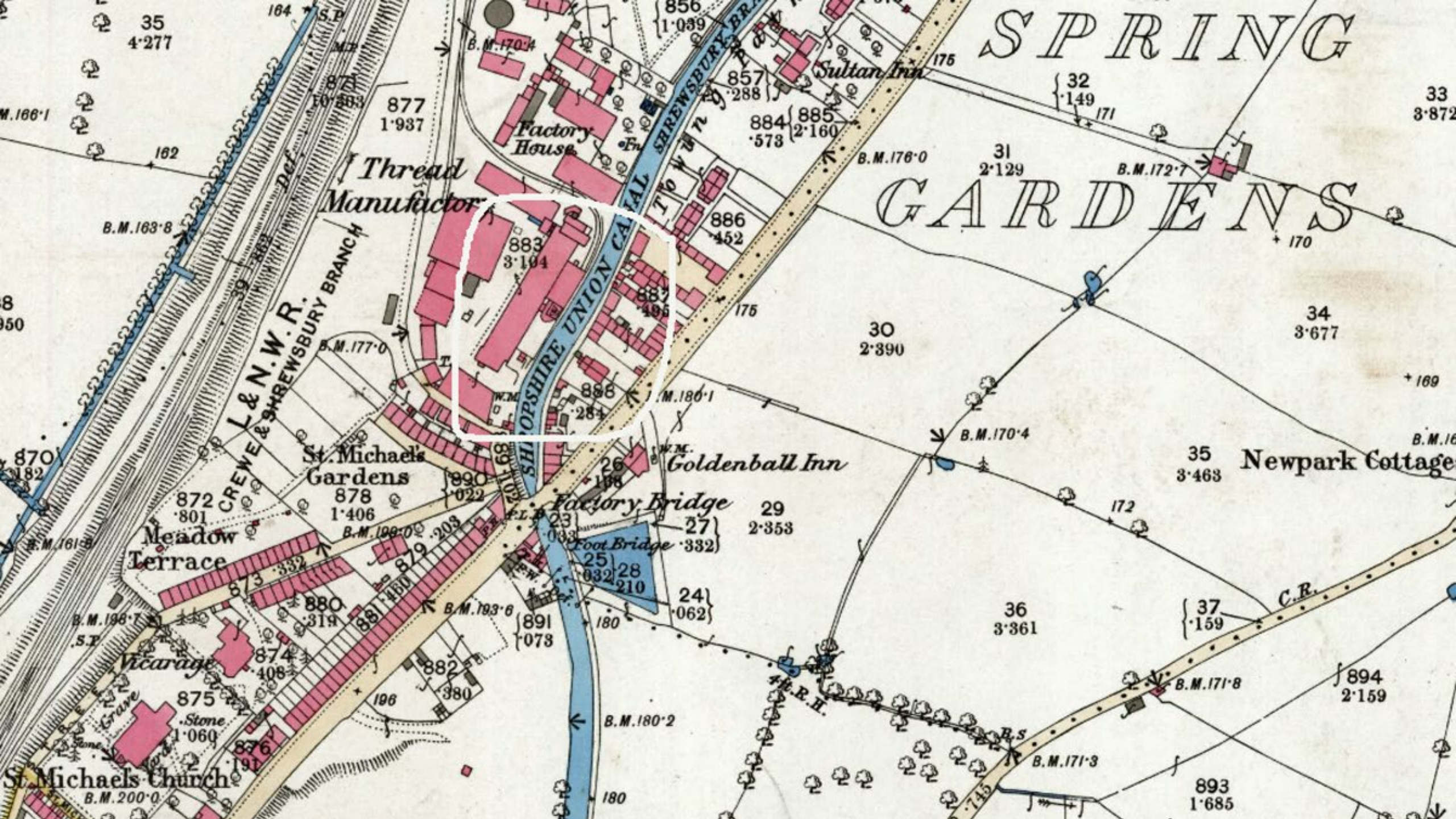








SHREWSBURY FLAXMILL MALTINGS

























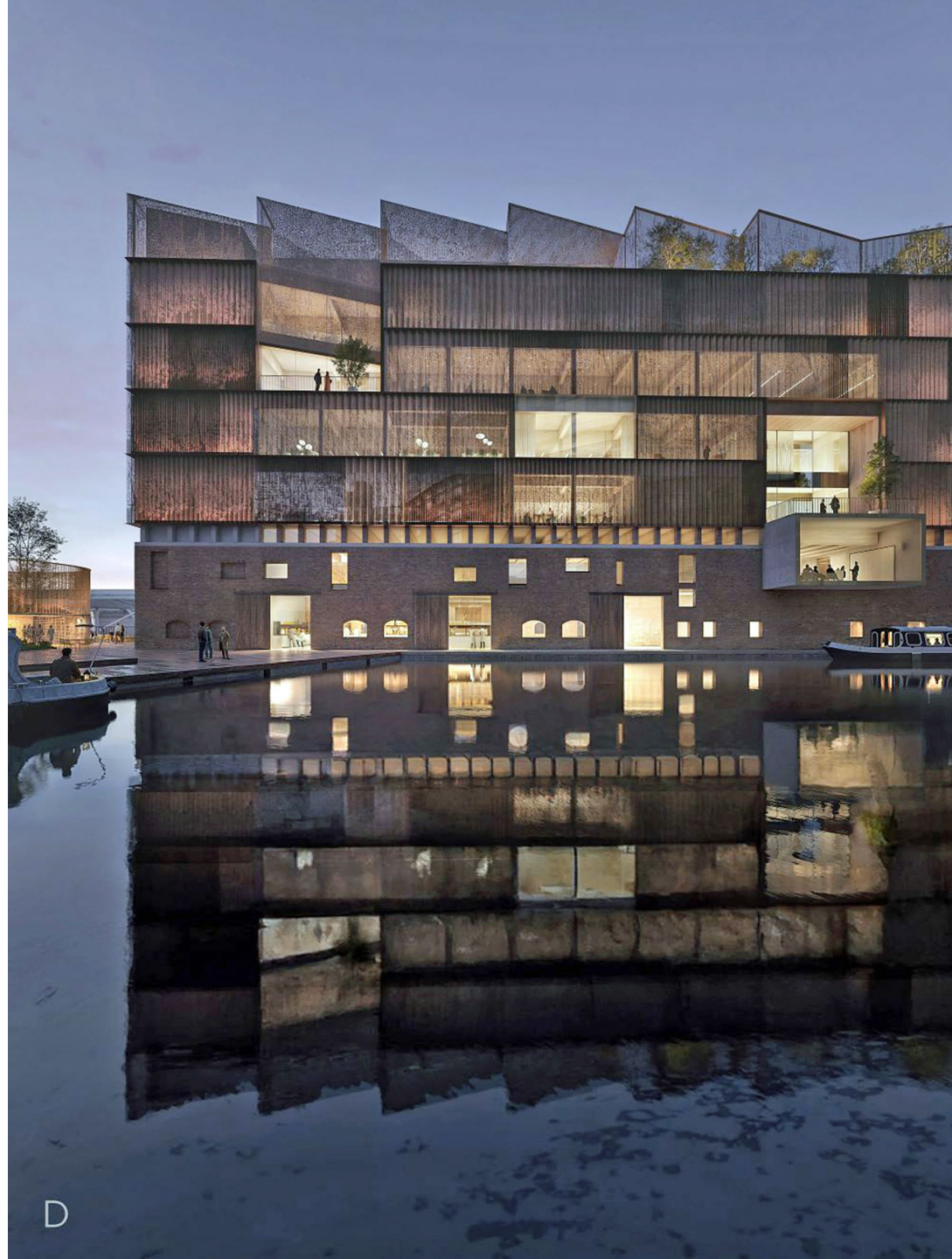












"MAID" LINE CRUISERS LTD.

FERRY YACHT STATION, THAMES DITTON, SURREY

(WITHIN 23 mins. OF WATERLOO)

Telephone : Emberbrook 1078 (three lines)

(ALTERNATIVE TURN-ROUND POINTS AT READING, BRAUNSTON AND STONE)

A SUPERB FLEET OF 44 SELF-DRIVE HIRE CRUISERS ON THE THAMES AND CANALS OF SOUTHERN ENGLAND

● Our craft cruise on the Upper Thames, Oxford, Grand Union, Wey Navigation, Coventry, Trent and Mersey and other Canals and we are extending available waterways to the North-West and South-West of England. Over 500 miles in all. ●

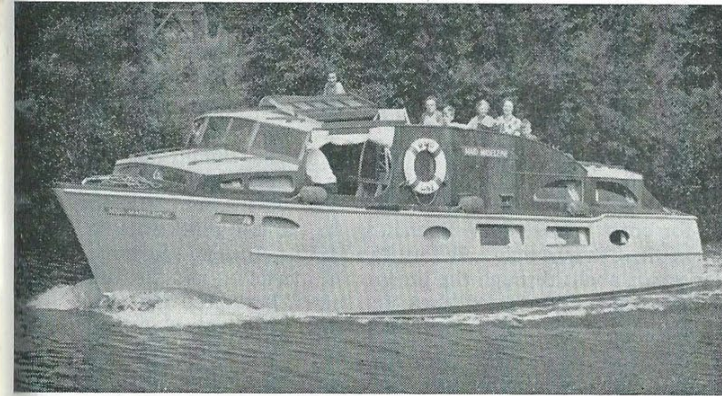
● Cruises can commence at Ditton, Reading, Braunston or Stone. You need not complete your cruise at the same base from which you started. ●

- | | |
|--|--|
| ● MODERN DIESEL AND PETROL MARINE ENGINES ● | ● FOAM RUBBER MATTRESSES, KEPCOLD COLD BOXES ● |
| ● ELECTRIC LIGHT, SAFETY GAS INSTALLATIONS ● | ● GAS COOKERS WITH OVENS ● |
| ● TUITION SERVICE AND GROCERIES SERVICE ● | ● FIRST-CLASS INVENTORY AND EQUIPMENT ● |

OVER 31 NEW CRUISERS ADDED TO THE FLEET IN LAST EIGHT YEARS



"Maid" Line Narrow-Beam Canal Cruiser.



"Maid" Line Sun-Deck Thames Cruiser.

FULL DETAILS IN OUR 92 PAGE ILLUSTRATED BROCHURE

OBTAINABLE FOR 1/-d. POST FREE FROM OUR HEAD OFFICE

BRITISH WATERWAYS

INLAND CRUISING BOOKLET

13

Cruising on the TRENT & MERSEY CANAL, Part 2

*between Preston Brook and Great Haywood including Staffordshire
& Worcestershire Canal to Autherley Junction*

Price 25p



BRITISH WATERWAYS

INLAND CRUISING BOOKLET

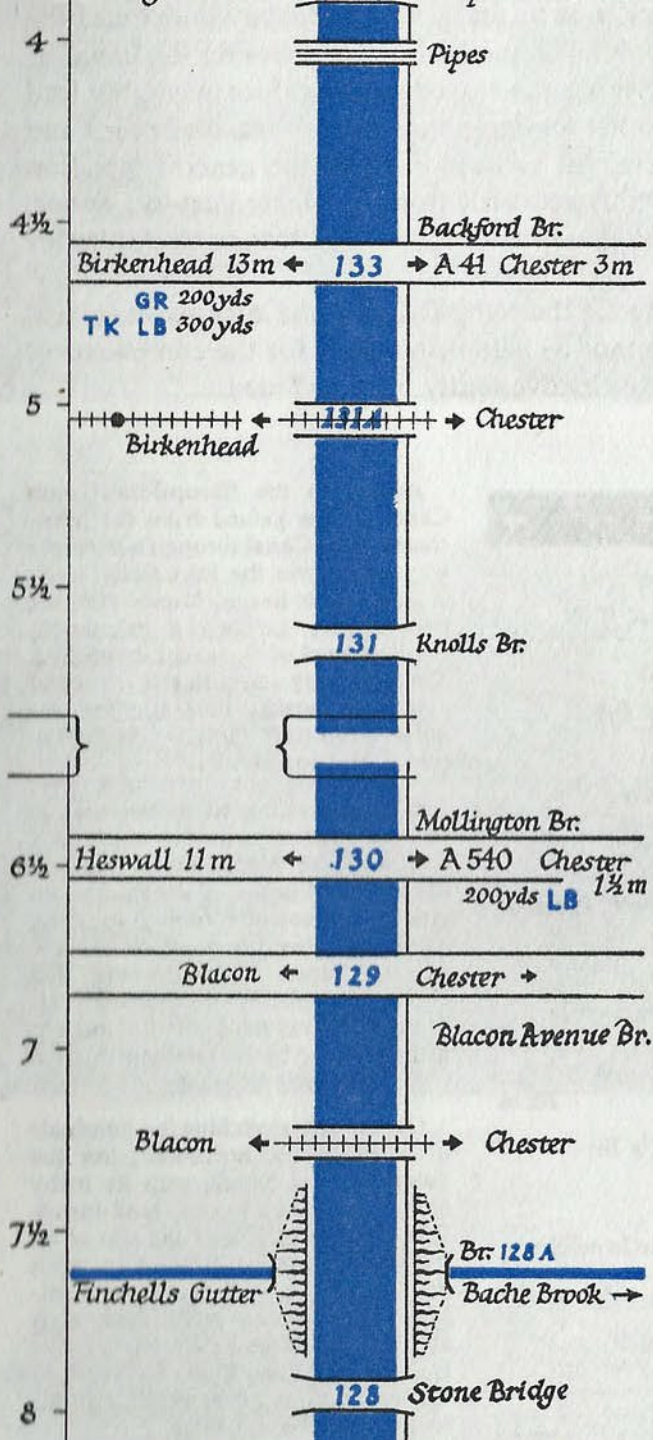
5

Cruising on the SHROPSHIRE UNION CANAL

Ellesmere Port to Autherley Junction

Price 25p



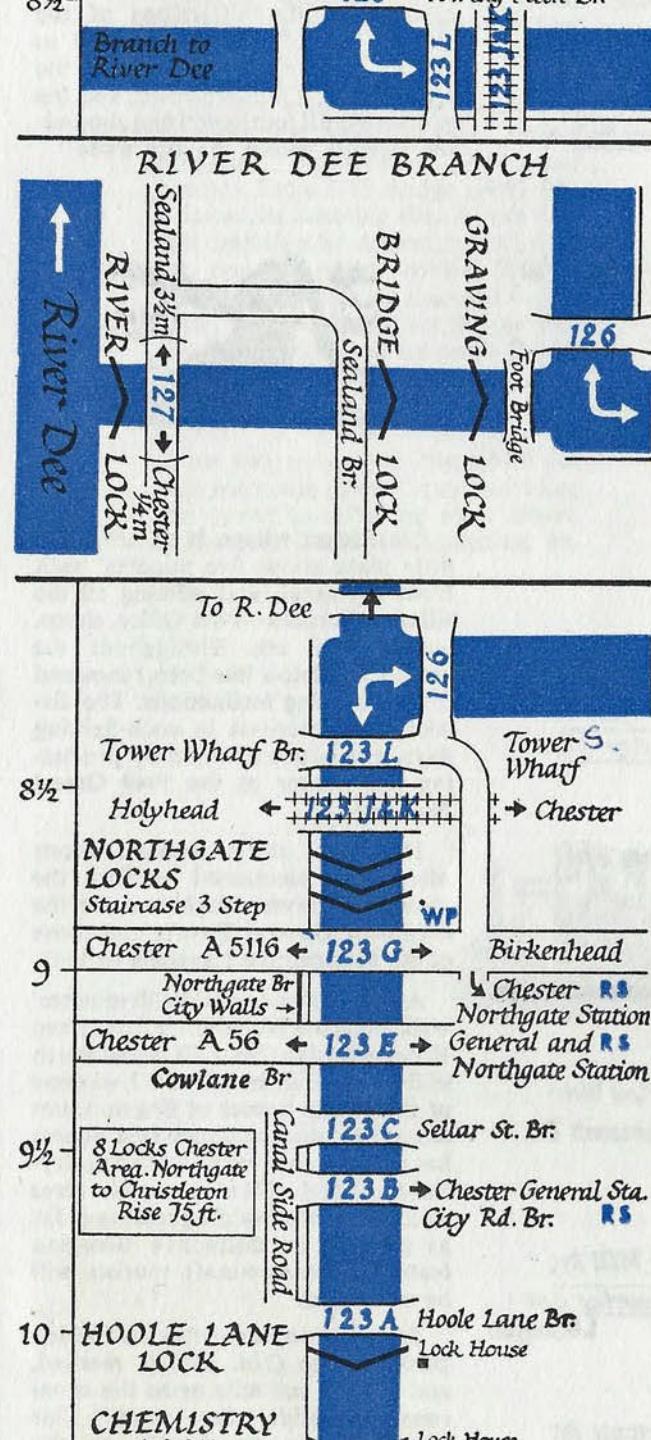


A short stay at Stoak is warranted. The 'Bunbury Arms' inn, which dates back for 400 years, lies 150yds along the road from Picton Lane Bridge (No. 136), and a little further on stands the old Saxon church of St. Lawrence. The whole of this village and the surrounding country was owned by Sir Henry Bunbury, Bart., but was bequeathed to the Ecclesiastical Commissioners, who have decreed that the inn should remain closed on Sundays.

Proceeding in a graceful curve to the west, the canal passes under Croughton Bridge and on to Caughall Bridge (No. 134), with its iron arch and parapet. About a mile along the road from the bridge is Upton village, where the Chester Zoo is located.

The canal next passes under the important Backford Bridge, which carries the main road (A41) from Birkenhead to Whitchurch and the south, and on to the railway viaduct known locally as the Eleven-Arch Bridge, a noble structure completed in 1839, over which passes the main line from Chester to Birkenhead.

Away to the west the Welsh hills are clearly visible, dominated by the peak of Moel Famau which overlooks the Vale of Clwyd.



after passing under the towing path bridge, are the locks and branch leading down to the River Dee. Tower Wharf is an excellent night mooring.

Immediately ahead are the three staircase-type Northgate Locks, giving a rise of 33 ft. and presenting an interesting engineering feature, the lock chambers being constructed in solid rock, as are also the deep cuttings through the city. A freshwater tap will be seen on the left at the top of the flight. Over the headgates of the top lock is the modern Chester inner ring-road viaduct.

For a quarter of a mile the canal proceeds through a cutting along the outside of the City walls, and hereabouts on the right will be seen the King Charles Tower from which in 1645 the ill-fated king is said to have watched the defeat of his forces at Rowton Moor, which is on the south bank of the canal some two miles further on.

Continuing through the city the canal passes under several important bridges carrying the city's traffic. Of these, City Road Bridge (No. 123B) may be specially mentioned, as 300 yds from it on the left is Chester General Station.

This city stretch, as may be expected, is surrounded by industrial activity. A plant which may attract special attention is that of the Associated Lead Co., with its tall tower lying to the left of the canal. This tower is one of only two in the whole country in which, by a process of 'gravitation spray', lead shot for sporting guns is manufactured.

Just beyond Hoole Lane Bridge, Hoole Lane Lock is reached, quickly followed by Chemistry Lock, Tarvin Road Lock, Greenfield Lock and lastly Christleton Lock. The eight locks in and above Chester have effected a total rise of some 75 ft. Beyond Christleton Lock lies Christleton Bridge, with the village of

The RIVERS THAMES, SEVERN & AVON, and ENGLISH CANALS

"HIRE A MAID"

- The Largest Fleet ● A Superb Standard of Comfort ●

Why not try a cruise on the lovely Rivers Thames, Severn and Avon and the exciting English Canals

A first class fleet of nearly 100 cruisers is available for you to choose from and many alternative starting and finishing places in all parts of the country. Our fleet comprises 2 to 10 berth cruisers from 19' to 46' in length, powered by either modern Diesel or Petrol marine engines.

SELF DRIVE

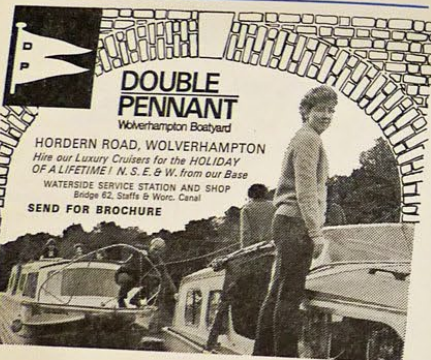
Mobile repair service for private owners available at any time.

NOVICES WELCOME

Please send for colour illustrated brochure.

MAID BOATS LIMITED

(Dept. T.B.), FERRY YACHT STATION, THAMES DITTON, SURREY
Telephone: 01-398 0271/2



DOUBLE PENNANT

Waterhampton Boatyard

HORDERN ROAD, WOLVERHAMPTON

Hire our Luxury Cruisers for the HOLIDAY

OF A LIFETIME! W.S.E. & W. from our Base

WATERSIDE SERVICE STATION AND SHOP

Bridge 62, Staffs & Worc. Canal

SEND FOR BROCHURE

28

INLAND CRUISING BOOKLETS

- No. 1 Llangollen Canal
- No. 2 Trent Waterway
Shardlow to Gainsborough
- No. 3 Lee and Stort
Navigations
- No. 4 Staffordshire &
Worcestershire Canal
Atherley Junction to
Stourport with the Stour-
bridge Canal from Black
Delft to Stourton Junction
- No. 5 Shropshire Union
Canal
- No. 6 Oxford Canal
Napton Junction to Oxford
- No. 7 Fossdyke and Witham
Navigations
- No. 8 Grand Union Canal
PART I Regent's Canal
Dock and Brentford to
Braunston Junction
- No. 9 Grand Union Canal
PART II Braunston Junction
to Birmingham returning
via the Birmingham & Faze-
ley, Coventry and Oxford
Canals
- No. 10 Grand Union Canal
PART III Norton Junction
to Trent Lock
- No. 11 Macclesfield Canal
with the upper part of the
Peak Forest Canal
- No. 12 Trent & Mersey Canal
PART I Trent Lock to
Great Haywood Junction
with parts of the Coventry
and Birmingham & Fazeley
Canals from Fradley Junction
to Fazeley Junction
- No. 13 Trent & Mersey Canal
PART II Preston Brook to
Great Haywood Junction,
with the Staffordshire &
Worcestershire Canal from
Great Haywood Junction to
Atherley Junction
- No. 14 Severn Waterway
Stourport to Sharpness
Docks, with the Worcester-
shire & Birmingham Canal
and the Stratford-on-Avon
Canal from King's Norton
Junction to Kingswood
Junction
- No. 15 Lancaster Canal
- No. 16 Leeds & Liverpool
Canal

A large-scale map of the Board's
waterways can be obtained from
BRITISH WATERWAYS BOARD
Willow Grange, Church Road,
Watford, Herts.

Price 7s. 6d. post free

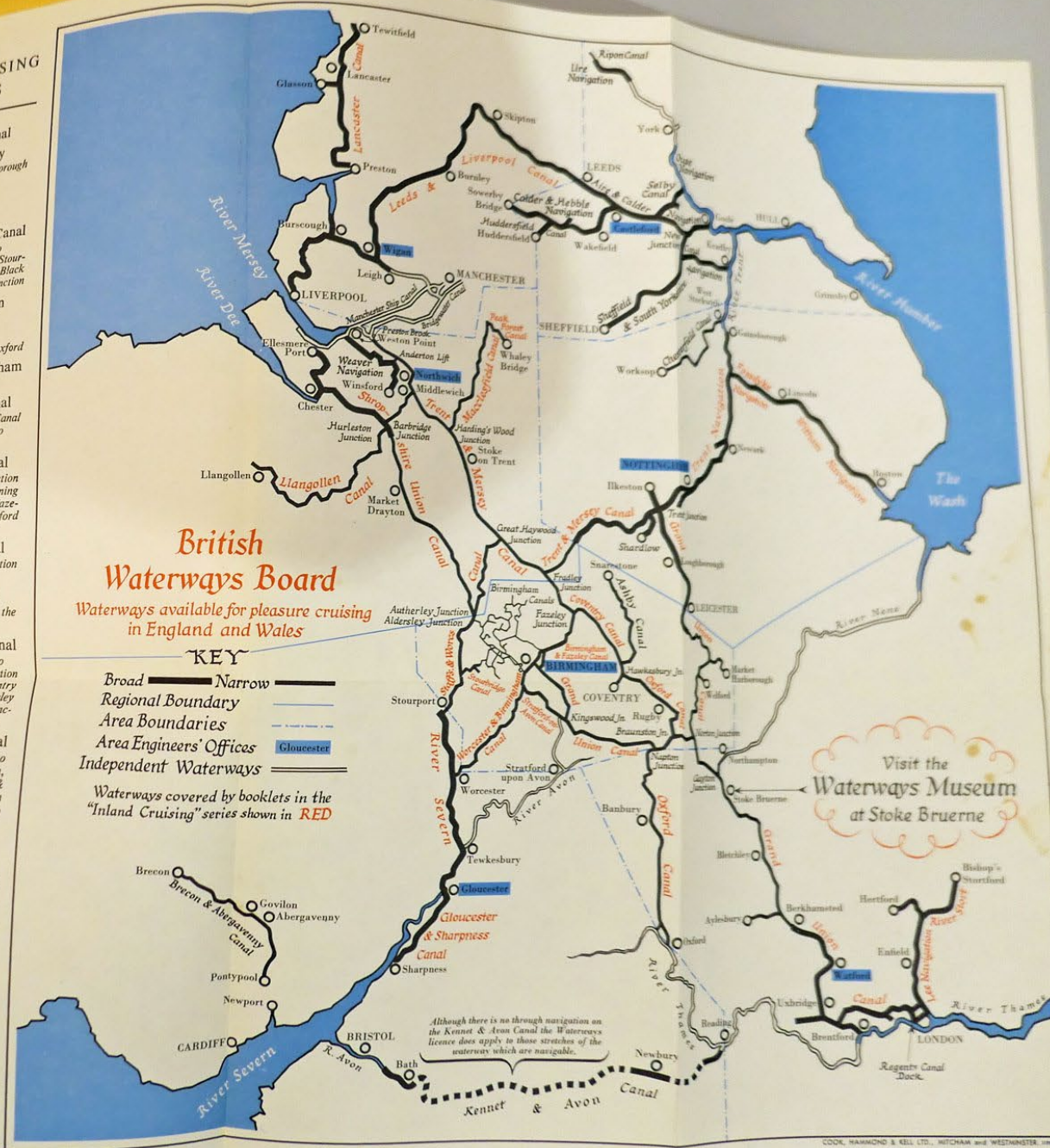
British Waterways Board

Waterways available for pleasure cruising
in England and Wales

KEY

- Broad ——— Narrow
- Regional Boundary
- Area Boundaries
- Area Engineers' Offices
- Independent Waterways

Waterways covered by booklets in the
"Inland Cruising" series shown in RED



Visit the
Waterways Museum
at Stoke Bruerne





**THE ASHTON AND LOWER PEAK FOREST CANALS
WERE RE-OPENED TO NAVIGATION BY
MR. DENIS HOWELL, M.P., MINISTER OF STATE,
DEPARTMENT OF THE ENVIRONMENT**

13 MAY 1974



This plaque was erected to
celebrate the efforts of the
Peak Forest Canal Society
and all other volunteers who
worked to recreate the
Cheshire Ring



Commissioned by Manchester Branch









